

MERCIAN CYCLES LTD.



**Specialists in Handbuilt
Frames and Cycles where
Craftsmanship and Quality count**

Showrooms: 28 STENSON ROAD, CAVENDISH, DERBY, DE3 7JB. Tel.: 769851.
Office & Works: PONTEFRACT STREET, ASCOT DRIVE, DERBY, DE2 8JD. Tel.: 46786.

MERCIAN

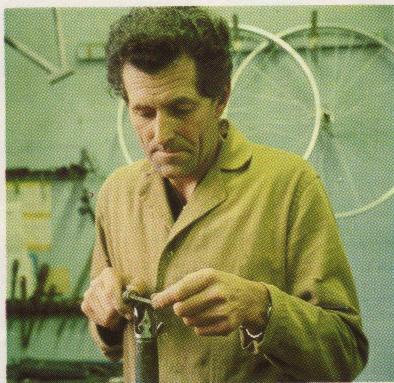
Custom Built Frames for the enthusiast

Mercian Cycles have been hand building frames in Derby for nearly 40 years and our standards for accuracy in building and the finest finishes available are known by enthusiasts throughout the world. Our Company name Mercian can be traced back into the history of bygone days – we are situated in the ancient Kingdom of Mercia – the capital being Repton – now a village a few miles south of Derby and famous for its public school. Natur-



lugs are hand brazed one at a time on the open hearth, which is the traditional method of hand building and is the hallmark of a top line lightweight frame.

Our top of the range models each have lugwork which is hand cut from blank lugs and our designs are sought by customers from all over the world. After building, all frames are shotblasted for a high quality surface finish before receiving the first of four finishing coats of paint and varnish.

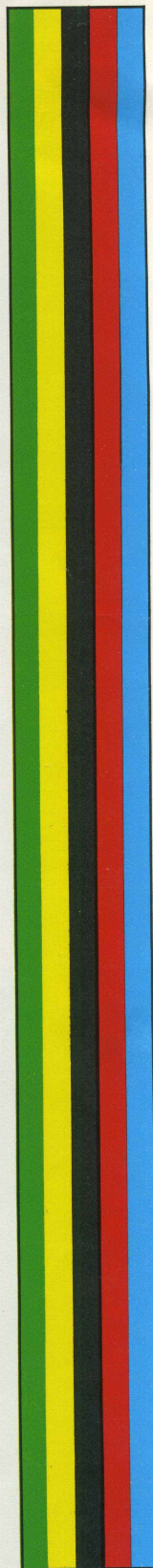


ally the people of Mercia were called Mercians. Every Mercian frame is built from the world renowned Reynolds double butted tubing, and each frame is hand made one at a time by one craftsman. No factory production line methods are used and so each Mercian frame is consistent in quality and finish. Every tube used on the frame is hand mitred, so that the internal joints on each frame are a perfect fit. All the



Each frame is sprayed to customers choice and is then oven-baked to give the most durable finish known. After hand lining and transfers, the frame is given a coat of clear varnish for a lasting finish.

Mercian frames can be finished in any colour from our range of over sixty colours – if your choice is not shown, then we can do almost any colour if a sample is supplied with the order. Enamel finishes can be had in any shade of any colour, but



MERCIAN

the other finishes can only be in the colours shown. Polychromatic colours have a metallic effect and our flamboyant finishes are a translucent colour on top of a silver undercoat. Our new Italian Pearl finishes have a metal flake effect and have to be seen in sunshine to appreciate the beautiful effect of this new finish. Each frame is then checked before despatch and each Mercian craftsman is conscious of quality control, taking great pride in the frame we produce.

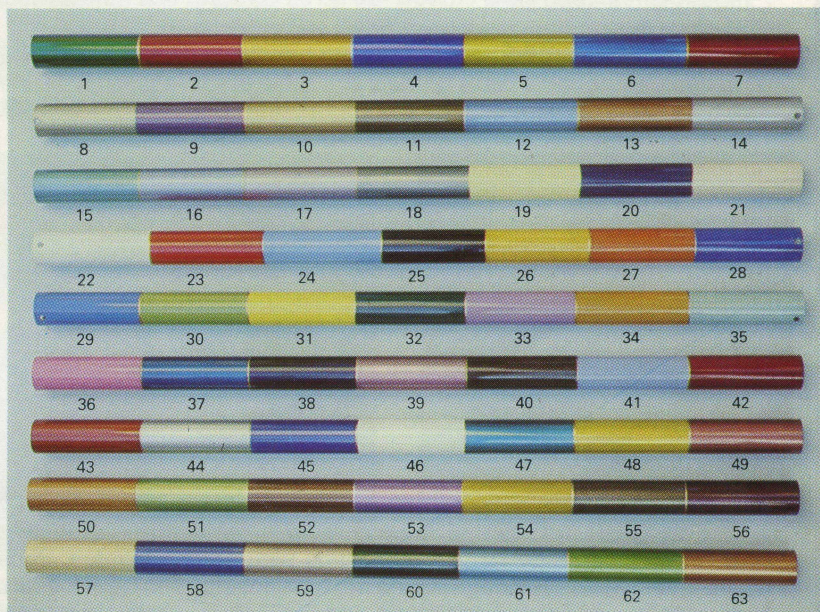


**ANY MODEL
CAN BE BUILT
INTO A
COMPLETE
CYCLE—
TO YOUR
SPECIFICATION**

(Details and Price upon request)

Mercian Frame Finishes

Please quote Reference No. when ordering.



MERCIAN



Tourist Tandem

After many years of planning and testing, Mercian Cycles are now able to offer one of the finest tandem frames ever produced. The machines handling, workmanship, and finish are the finest available. The design is extremely responsive yet comfortable, making it suitable for racing as well as touring. The frame is of bronze welded construction throughout, thus enabling over sized double butted tubing to be used for added rigidity. Our tandem frames are all made by one of our top craftsmen, and each frame is handmade to customer's own requirements.

DOUBLE DIAMOND TOURIST MODEL

Reynolds '531' Double Butted Tubing.

Frame sizes to order.

Campagnolo Record ends.

Clearance for 27" high pressure wheels and mudguards.

Campagnolo down tube gear bosses, OR handlebar control eyes to choice.

10 speed Campagnolo cable tunnels and cable eye on chainstay.

Top tube cable eyes for bare wire brake operation.

Cantilever brake pivots with centre pull bridge on seatstays.

No pump pegs (frame-fit pump used).

Allen key seat lug bolt fitting.

Seat pillar size (not included) – 27.2 mm.

Campagnolo Record headset.

Any additional brazings for hub or disc brake, dynamo, bottle cage bosses, lamp boss, or carriers are extra as per price list.

Finish

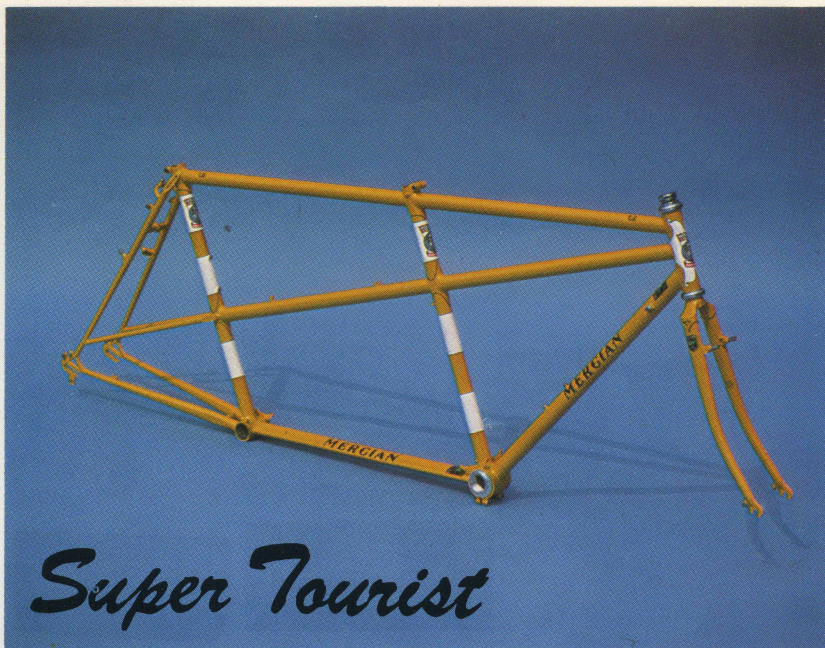
Any colour of your choice with contrasting head and seat tube bands, lugs lined and Mercian transfers. Chrome plating to order.

Complete Machines

Complete Machines – are available to order. Tourist specification includes TA tandem chainsets, Cantilever tandem brakes, Weinmann Concave A129 rims on Maxicar alloy large flange hubs with 13 g. spokes, Campag 10 speed gears with Campagnolo down tube levers, alloy bars and stem, saddles to choice, alloy quill pedals, and ESGE Chromoplastic mudguards.



MERCIAN



Super Tourist

The Super Tourist Tandem is ideal for extended tours with heavy loads. This model has a $1\frac{1}{8}$ " bracing tube from the centre of the head through to the rear seat tube with extra stays brazed onto the seat stays above the rear ends. This design is ideal for larger frame sizes for added rigidity, but is not practical on frame sizes under 22" – as the head tube is not big enough for the extra bracing tube. On frames with different seat tube size, the top tubes are sloped in a direct line, as this design is more rigid. Customers should note that top tube measurements are measured in a horizontal plane, as on a solo frame, and not along a sloping top tube.

SUPER TOURIST MODEL

Reynolds '531' Double Butted Tubing.

Specification and brazings as on our Double Diamond Tourist Model.

Finish

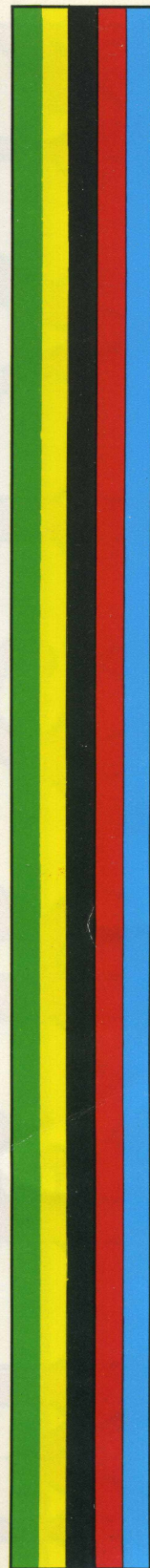
Any colour of your choice with contrasting head and triple seat tube bands, lugs lined and Mercian transfers. Chrome plating to order.



**Hand cut Lugs on
Mercian Tandems**



**Rear ends on
Super Tourist Model**



MERCIAN



In an age of mass-production, it is rather pleasing to find a frame with intricate hand cut lugwork as on our Vincitore touring model. Our craftsmen spend many hours cutting and filing the Vincitore lugs from blank lugs, and the result is a distinctive frame that is not available from any other manufacturer in the world. Currently the most sought after model in the Mercian range, it is also extremely popular with our American customers.

Touring Model Specification

Reynolds '531' Double Butted "Competition" Tubing.

Size to order – 19" to 26".

72° head angle – 74° seat angle (19" to 21½").

73° head angle – 73° seat angle (22" to 24").

73° head angle – 72° seat angle (24½" to 26").

10 5/8" bottom bracket height.

1 7/8" fork rake (longer on small frames), with new oval Continental forks.

17¼" chain stays.

½" diameter or 5/8" diameter seat stays with MERCIAN engraved at top.

Clearance for 27" H.P.'s or 700c (state choice).

Campagnolo Record ends and mudguard eyes.

Brazed on fittings for 10 speed gears with a 'pip' on down tube for gear levers.

(Campagnolo gear lever bosses, top tube brake cable guides or eyes, and pump pegs can be fitted upon request at no extra cost).

T.A. bottle cage bosses, Cantilever brake pivots, centre pull brake bridge, lamp boss, and pannier frame fittings can be brazed on at extra cost.

Seat pillar size (not included) 27.2 mm.

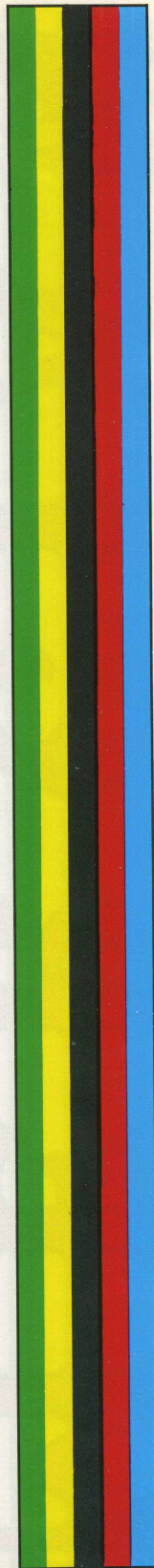
TANGE head set fitted.

Finish

Any colour of your choice with contrasting head and seat tube bands, lugs lined and Mercian transfers. Additional bands extra.

Special Orders

From our experience, the above specification suits most customers, but we can build this model to your own specification if required.



MERCIAN



Professional

Our Professional model has a unique spearpoint bottom bracket shell that is rarely found on other makes of frames. The 3" long spearpoints are steel welded onto the bottom bracket shell before the frame is built, and this makes an extremely rigid frame, unlike other makes where a spearpoint is brazed on after the frame is made, and only has a cosmetic value. The frame is built with special hand filed Prugnat Italian lugs.

Racing Model Specification

Reynolds '531' Double Butted "Competition" Tubing.

Size to order 19" to 26".

73° head angle – 75° seat angle (19" to 21½").

74° head angle – 74° seat angle (22" to 26").

10 5/8" bottom bracket height.

1¼" fork rake (longer on small frames), with new oval Continental forks.

16¼" chain stays.

½" diameter or 5/8" diameter seat stays with MERCIAN engraved at top.

Close clearance for sprint wheels only – no mudguard eyes.

Campagnolo Super Record ends.

Brazed on fittings for 10 speed with a 'pip' on down tube for gear levers.

(Campagnolo gear lever bosses, top tube brake cable guides or eyes, and pump pegs can be fitted upon request at no extra cost).

T.A. bottle cage bosses, or any other brazed on fittings, can be brazed on at extra cost as per price list.

Seat pillar size (not included) – 27.2 mm.

TANGE headset fitted.

Finish

Any colour of your choice with contrasting head and seat tube bands, lugs lined and Mercian transfers. Additional bands extra.

Special Orders

From our experience, the above specification suits most customers, but we can build this model to your own specification if required.



MERCIAN



Strada Speciale

Recently introduced to the Mercian range for the rider who likes his frame to be lightened by drilling the lugs, but at the same time, requires a touch of individuality that other frames lack. All the long point lugs are hand cut with a stylish clover leaf. The Strada Speciale also has the seat stays fitted to the rear of the seat tube and an allen key seat lug fitting is included.

Racing Model Specification

Reynolds '531' Double Butted "Competition" Tubing.

Size to order – 19" to 26".

73° head angle – 75° seat angle (19" to 21½").

74° head angle – 74° seat angle (22" to 26").

10 5/8" bottom bracket height.

1¼" fork rake (longer on small frames), with new oval Continental forks.

16¼" chain stays.

½" or 5/8" diameter seat stays butted on to rear of seat tube.

Close clearance for sprint wheels only – no mudguard eyes.

Campagnolo Super Record ends.

Brazed on fittings for 10 speed with a 'pip' on down tube for gear levers. (Campagnolo gear lever bosses, top tube brake cable guides or eyes, and pump pegs can be fitted upon request at no extra cost).

T.A. bottle cage bosses, or any other brazed on fittings, can be brazed on at extra cost as per frame price list.

Seat pillar size (not included) – 27.2 mm.

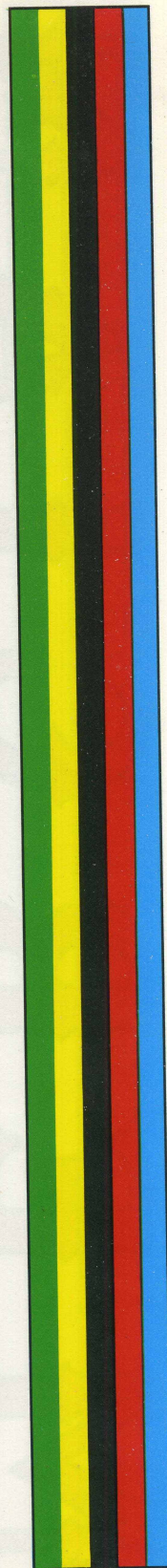
TANGE headset fitted.

Finish

Any colour of your choice with contrasting head and seat tube bands, lugs lined and Mercian transfers. Additional bands extra.

Special Orders

From our experience, the above specification suits most customers, but we can build this model to your own specification if required.



MERCIAN



The Mercian Superlight model was first introduced to the Mercian range nearly 30 years ago, and was the first frame to be built with the now popular fast back seat stays. Every unnecessary ounce is cut away from the lugs, making it the time triallist's dream frame. The delicate hand cut lugs look barely enough to support the frame, but frames built 30 years ago are still in use today. An allen key seat lug fitting is also included on this model.

Racing Model Specification

Specification and brazings as on our Strada Speciale model.

Lighter Tubing

Reynolds New "Professional" Tubing with double taper seat stays and also Reynolds "Special Lightweight" Tubing can be used at extra cost.



Clover leaf cutouts on the Strada Speciale.



Hand cut Superlight lugs.



MERCIAN



Miss Mercian

Our Miss Mercian model is one of the few custom built ladies frames available today. The lugs for ladies frames of the quality that Mercian require are no longer available, so our craftsmen custom make the lugs for this frame. The price of this model reflects this extra care taken in building the frame, but the end result is a masterpiece not available from any other source.

Touring Model Specification

Reynolds '531' Double Butted "Competition" Tubing.

Size to order – 19" to 26".

72° head angle – 74° seat angle (19" to 21½").

73° head angle – 73° seat angle (22" to 26").

10 5/8" bottom bracket height.

1 7/8" fork rake (longer on small frames), with new oval Continental fork blades.

17¼" chain stays.

½" diameter or 5/8" diameter seat stays with MERCIAN engraved at top.

Clearance for 27" high pressures and mudguards.

Campagnolo Record ends and mudguard eyes.

Braze on fittings for 10 speed gears with a 'pip' on down tube for gear levers.

Brake cable eyes brazed on top of twin lateral stays for brake operation on twin lateral stay bridge.

Pump pegs under twin lateral stays, or front of seat tube.

Seat pillar size (not included) 27.2 mm.

TANGE headset fitted.

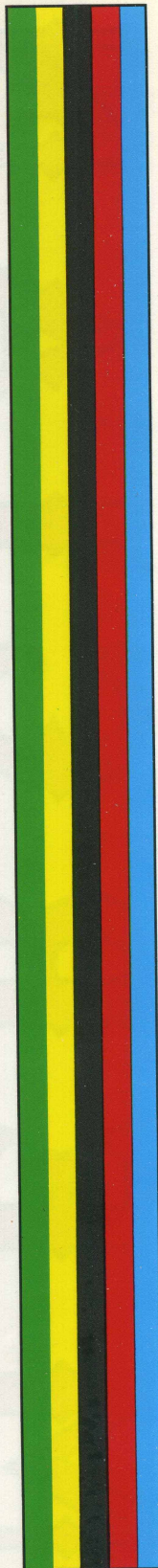
Finish

Any colour of your choice with contrasting head and seat tube bands, lugs lined and Mercian transfers. Chrome plating to order.

Additional bands extra.

Special Orders

From our experience, the above specification suits most customers, but we can build this model to your own specification if required.



MERCIAN



'753 Special'

Mercian Cycles were one of the first builders to be approved by T.I. Reynolds to use their extra thin walled 753 tubing. The tubing is a special manganese molybdenum steel cycle tube that has been developed by Reynolds engineers, and has exceptional physical properties which permit frame tubes to be produced in wall thicknesses down to approximately 0.3 mm. The high stiffness of 753 tubing ensures that we can build top quality frames with extreme lightness and high rigidity.

Racing Model Specification

Reynolds '753' tubing.

Long point lugs with heart cutouts.

Size to order – 19" to 25".

73° head angle – 75° seat angle (19" to 21½").

74° head angle – 74° seat angle (22" to 25").

10 5/8" bottom bracket height.

1¼" fork rake – (longer on small frames).

16¼" chainstays.

Semi-wrapover seat stays.

Close clearance for sprint wheels only – no mudguard eyes.

Campagnolo Super Record ends.

Fittings for 10 speed gears with a 'pip' on the down tube.

(Campagnolo gear lever bosses, top tube brake cable guides or eyes, or pump pegs can be fitted upon request at no extra cost).

T.A. bottle cage bosses can be fitted – see price list.

Seat pillar size – 27.00mm and 27.2mm (not included).

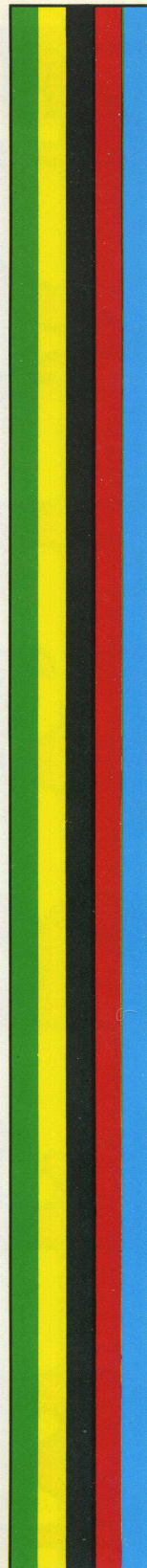
Campagnolo Super Record head set fitted.

Finish

Any colour of your choice with contrasting head and seat tube bands, lugs lined and Mercian transfers. Chrome plating on dropouts and crown only – extra as price list.

Special Orders

From our experience, the above specification suits most customers, but we can build this model to your own specification if required.



CINELLI MERCE



King of Mercia- Touring

Our King of Mercia Tourist is the most popular model in our range of custom built touring frames. The frame is built with the popular long point lugs, with heart cutouts, which are finely filed. The forks are built with the latest Romani semi sloping fork crown, but a Cinelli full sloping fork crown can also be used. Continental fork blades are included on this model.

Touring Model Specification

Reynolds '531' Double Butted "Competition" Tubing.

Size to order - 19" to 26".

72° head angle - 74° seat angle (19" to 21½").

73° head angle - 73° seat angle (22" to 24").

73° head angle - 72° seat angle (24½" to 26").

10 5/8" bottom bracket height. 17¼" chainstays.

1 7/8" fork rake (longer on small frames).

1/2" diameter or 5/8" diameter seatstays with Mercian engraved.

Clearance for 27" H.P.'s or 700c (state choice).

Campagnolo Record ends and mudguards eyes.

Brazed on fittings for 10 speed with a 'pip' on down tube for gear levers.

(Campagnolo gear lever bosses, top tube brake cable guides or eyes, and pump pegs can be fitted upon request at no extra cost).

T.A. bottle cage bosses, Cantilever brake pivots, centre pull brake bridge, lamp boss, and pannier frame fittings can be brazed on at extra cost.

Seat pillar size - 27.2 mm (not included).

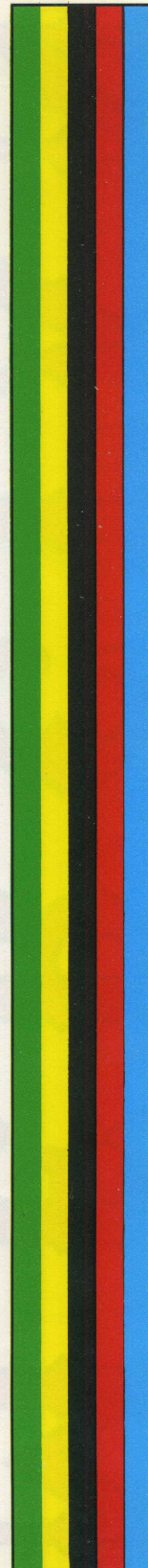
TANGE headset fitted.

Finish

Any colour of your choice with contrasting head and seat tube bands, lugs lined and Mercian transfers. Additional bands extra.

Special Orders

From our experience, the above specification suits most customers, but we can build this model to your own specification if required.



MERCIA



King of Mercia-Tourist Cycle

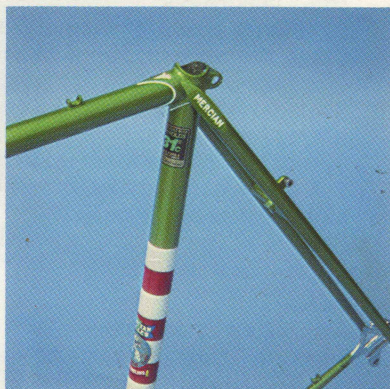
Designed for the serious cyclist who expects to spend many hours upon his bike, the King of Mercia Tourist cycle is specifically made for the growing number of riders seeking exciting responsive handling whether touring with panniers, or just day riding. This model is a triumph of crisp, sporty performance and modern Italian styling in a touring design.

King of Mercia Tourist Cycle Specification

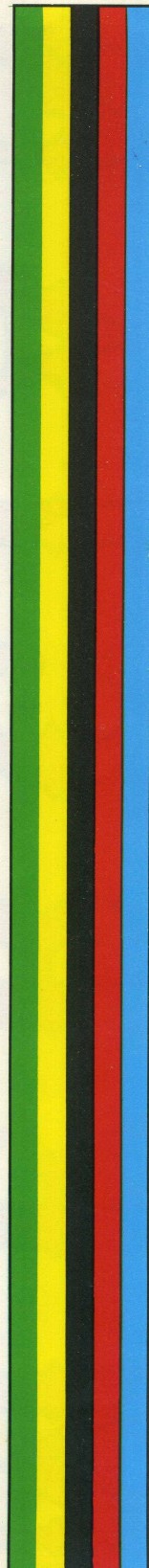
King of Mercia frame – custom made to your requirements. Fitted with Weinmann narrow concave A124 rims on large flange quick release hubs, TA cotterless chainset with TA cyclotouriste chainrings (sizes to choice), Sun Tour gears, SR bars and stem, Weinmann '605' sidepull brakes, and ESCE chromoplastic mudguards. (alloy carrier and bottle cage optional extras).



Heart cutout lugs and Romani crown on King of Mercia



Mercian engraved seat stays on King of Mercia.



MERCIAN



King of Mercia. Racing

Our King of Mercia Racing model is designed for the racing enthusiast who must have the best. Each frame is hand built one at a time by one of our craftsmen, unlike many other makes of a similar price range which are 'production line made'. The forks are fitted with the latest Romani semi-sloping crown together with new continental oval fork blades. The seat stays have Mercian engraved on the top eye which is outlined in contrast.

Racing Model Specification

Reynolds '531' Double Butted "Competition" Tubing.

Size to order 19" to 26".

73° head angle – 75° seat angle (19" to 21½").

74° head angle – 74° seat angle (22" to 26").

10 5/8" bottom bracket height.

1¼" fork rake (longer on small frames), with new oval Continental forks.

16¼" chainstays.

½" diameter or 5/8" diameter seat stays with MERCIAN engraved at top.

Close clearance for sprint wheels only – no mudguard eyes.

Campagnolo Super Record ends.

Braze on fittings for 10 speed gears with a 'pip' on down tube for gear levers. (Campagnolo gear lever bosses, top tube brake cable guides or eyes, and pump pegs can be fitted upon request at no extra cost).

T.A. bottle cage bosses, or any other brazed on fittings, can be brazed on at extra cost as per price list.

Seat pillar size – 27.2 mm (not included).

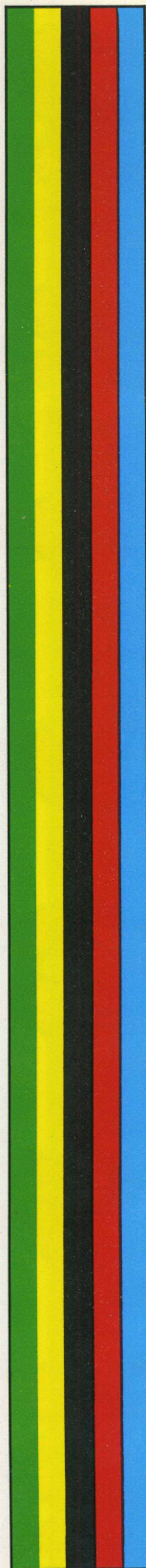
TANGE headset fitted.

Finish

Any colour of your choice with contrasting head and seat tube bands, lugs lined and Mercian transfers. Additional bands extra.

Special Orders

From our experience, the above specification suits most customers, but we can build this model to your own specification if required.



MERCIAN



An excellent all rounder frame which serves equally well for recreation and touring, but is still appealing as a racing frame. This model is primarily designed for the rider who is content to leave the geometry and design to our many years of experience. Consequently, we are able to offer a handmade frame at a very competitive price, but built with exactly the same quality and precision as the dearer frames in the Mercian range. The frame now has heart cutouts on the lugs.

Specification

Reynolds 531 double butted tubing.

20" to 25" in half inch sizes.

72° head angle – 74° seat angle (20" to 21½").

73° head angle – 73° seat angle (22" to 25").

10 5/8" bottom bracket height.

1 7/8" fork rake.

Semi-wrapover seat stays.

17" chain stays.

Campagnolo Record ends with mudguard eyes.

Brazed on fittings for 10 speed gears with a lever 'pip' on the down tube.

Close clearance for light 27" H.P.'s and 700c wheels.

Seat pillar size – 27.2 mm. (not included).

TANGE headset fitted.

OPTIONAL EXTRAS: (See price list for extra charges).

3 top tube guides for covered brake cable on top of top tube.

TA bottle cage bosses on down tube.

Finish

Any colour of your choice, with lugs lined and Mercian transfers.

Any additional bands extra. Chrome plating to order.

Special Orders

No alterations to the above specification can be accepted.



MERCIAN



Our Classic frame is the latest addition to the Mercian range. The frame and forks are built from Reynolds new '531' Special Tourist double butted tubing and fitted with Campagnolo style forged ends with adjusters. The Classic is a lively touring frame and has the usual Mercian high quality workmanship not usually seen on frames of this price.

The Classic is also available as a complete machine. The wheels have the new British Mistral alloy rims on Campagnolo quick release hubs, with stainless steel spokes. The cycle is also fitted with a Stronglite '99' chainset, Sun Tour gears, Weinmann side pull brakes and Madison Strada saddle.

Specification

Reynolds '531' double butted Special Tourist tubing.

20" to 25" in half inches.

Clearance for light 27" H.P.'s and 700c wheels.

72° head angle – 74° seat angle (20" to 21½").

73° head angle – 73° seat angle (22" to 25").

17⅛" fork rake.

10⅝" bottom bracket height.

Forged end with adjusters.

Brazed on fittings for 10 speed with a lever 'pip' on down tube.

Brazed on top tube guides.

Tange headset.

OPTIONAL EXTRAS: TA bottle cage bosses and lamp boss.

Finish

Any colour of your choice with lugs lined and Mercian transfers (flamboyant and pearl finishes, and panels are extra as price list). Chrome plating to order.

Special Orders

NO alterations to the above specification can be accepted.

68988/2

Mercian Cycles Ltd.

Retail Sales and Showroom:
7 Shardlow Road, Alvaston
Derby, DE2 0JG.
Telephone (0332) 752468

Office and Works:
Pontefract Street, Ascot Drive,
Derby, DE2 8JD.
Telephone (0332) 46786

Retail Frame Price List

APRIL 1st 1985

VAT EXTRA AT CURRENT RATE (UK SALES ONLY)

'753 SPECIAL'

The ultimate in a racing frame — built to order with Reynolds '753' tubing — the lightest frame in the Mercian range. A Cinelli investment cast bottom bracket shell is included in the price.

£325.00

531 COMPETITION LUGLESS

Built from Reynolds '531C' tubing in lugless style, allowing complete freedom of design. The frame is built with Campag Super Record ends and a full sloping Cinelli Fork Crown. Stronglight alloy head set is included in the price.

£215.00

VINCITORE

Intricate hand cut lugs make this a really distinctive model, and is one of our most popular touring frames. Long B.B. spearpoints (similar to professional) with fancy cutouts can also be ordered. £45.00 + VAT extra.

£215.00

PROFESSIONAL

Reinforced spearpoints on the bottom bracket shell add to rigidity, which makes an excellent racing frame.

£200.00

SUPERLIGHT

Hand cut lugs cut away in a distinctive style make this an ideal time trial frame.

£200.00

STRADA SPECIALE

A specially introduced model for the discerning rider — the lugs are hand cut with stylish clover leaf cutouts

£200.00

MISS MERCIAN

Distinctive styling and lugwork — one of the few custom-made ladies frames available today.

£200.00

KING OF MERCIA

Our most popular custom built frame — available in either touring or racing versions — built with long point lugs and heart cutouts, with the new Italian continental oval forks now included in the price.

190.225.
£165.00

SUPER VIGORELLI

The only track model in the Mercian range — built to order with long point lugs, with heart cutouts.

£165.00

OLYMPIC

An excellent all rounder frame available only to our specification — T.A. bottle cage bosses, Campag lever bosses, and Blackburn rear rack eyes can be fitted at extra cost. 3 top tube guides on top of top tube are now included in price. Wheel clearance for 700C's and narrow section 27" H.P's.

175.
£150.00

CLASSIC

Built from Reynolds 531 double butted tubing, only to our specification, this model has the class workmanship as the rest of the Mercian range at an economical price. T.A. bottle cage bosses, Campag lever bosses, and Blackburn rear rack eyes can be fitted at extra cost. Wheel clearance for 700C's and narrow section 27" H.P's.

167.50
£145.00

FURTHER FRAME INFORMATION IS ON THE BACK OF THE PRICE LIST

Renovation Price List

(FOR ANY MAKE OF FRAME)

VAT EXTRA AT CURRENT RATE (UK SALES ONLY)

APRIL 1st 1985

FINISH

Frame and forks stove enamelled in enamel or polychromatic	£23.00
Frame and forks stove enamelled in Italian pearl	£27.50
Frame and forks stove enamelled in flamboyant	£27.50
Frame only stove enamelled in enamel or polychromatic	£21.00
Frame only stove enamelled in flamboyant or Italian pearl	£25.00
Forks only stove enamelled in enamel or polychromatic	£6.50
Forks only stove enamelled in flamboyant or Italian pearl	£7.25
Trike frame and forks in enamel or polychromatic	£35.00
Tandem frame and forks stove enamelled in enamel or polychromatic	£46.00
Tandem frame and forks stove enamelled in Italian pearl	£55.00
Tandem frame and forks stove enamelled in flamboyant	£55.00

CONTRASTS

	Enamel; Lustre.	Pearl; Flam.
Contrast band on seat tube	£4.75	£5.50
Triple seat tube bands (one colour)	£5.75	£6.75
Split seat tube bands (any number and colour)	£8.75	£10.00
Whole seat tube in contrast colour	£6.50	£7.50
Barbers pole on seat tube	£8.75	£10.00
Rear triangle and forks in contrast colour	£8.75	£10.00
Head tube	£5.00	£5.75
Two-colour head tube	£7.50	£8.50
Band on top tube, or down tube	£4.75	£5.50
Oval panel on seat tube, or down tube (each side)	£6.50	£7.25

LINING

Lug lining	£5.75
------------------	-------

TRANSFERS

Fit makers transfers (transfers extra at cost)	£3.75
Supply and fit Olympic band (per band)	£0.50

CHROME

Mask and save chrome crown	£3.25
Mask and save chrome front dropouts	£3.00
Mask and save chrome rear dropouts	£4.50
Mask and save chrome front ends	£3.00
Mask and save chrome rear ends	£4.75
Mask and save chrome head lugs	£6.75

FITTINGS

Fit new head set (new fittings charged at current prices)	£4.00
Fit new bottom bracket set (new fittings charged at current prices)	£4.00
Remove and save head set	£2.50
Remove and save bottom bracket set	£2.50
Remove and refit head set (including new bearings)	£5.75
Remove and refit bottom bracket set (including new bearings)	£5.75
Strip and reassemble cycle — fitting of new components charged extra	£25.00
Remove and refit head badge	£1.00

Repair Price List for Any Make of Frame

VAT EXTRA AT CURRENT RATE (UK SALES ONLY)

The first part of this price list is for the repair of any make of frame, including Mercian frames. Headset and bottom bracket fittings should be removed if possible. All prices include Reynolds '531' Double Butted Tubing, forks and stays.

New pair forks (standard crown)	£35.00
New pair forks (Romani crown)	£40.00
Braze on pump pegs, brake or gear cable guides, pannier frame eyes — each	£2.20
Braze on 'Saba' combined stop/guide on c/stay	£2.20
Campagnolo gear hanger brazed on	£6.50
New reinforced brake and mudguard bridge	£6.50
New Bottom Bridge	£5.75
Lamp bracket boss	£3.50
Tunnel on bottom bracket (standard)	£3.25
Tunnel under bottom bracket	£3.75
Re-track frame and forks	£7.00
Re-track frame only	£4.50
Straighten and re-track forks — if possible	£6.00
Centre pull bridge on seat stay — including adjuster	£7.50
Remove brazed-on bits and clean up tube — each item	£1.50
Braze on Allen key seat lug fitting (with key and bolt)	£9.00
Braze on cantilever brake parts — per brake (please state high pressures or sprints)	£7.50
Small dents filled in where possible	£3.25
Braze on TA bottle cage bosses (with Allen key and bolts)	£6.00
Braze on Campag lever boss (with backplate and washer)	£4.50
Braze on dynamo bracket on frame, or on c/stays for sanyo dynamo	£10.00
Remove seat pillar or h/bar extension	£6.00
Braze on Blackburn rear rack eyes	£9.00
Braze on Blackburn front lowrider rack eyes	£9.00
Concealed dynamo wiring in frame	£10.00
Stamp post code on bottom bracket	£2.00
Drill frame and fork for allen key brakes	£5.00
Braze on front gear changer boss on seat tube	£10.00

Repair Price List for Mercian Frames

VAT EXTRA AT CURRENT RATE (UK SALES ONLY)

This part of the price list is for the repair of Mercian frames only. Please note that it is not practical for us to repair other makes of frames requiring the repairs detailed on this part of the price list.

New bottom bracket shell and bottom bridge	£27.50
New top tube	£20.00
New down tube	£20.00
New top tube and down tube	£45.00
New seat tube	£25.00
New head tube and lugs	£25.00
New top, down, head tube and head lugs	£45.00
Fit single seatstay	£19.00
Fit single chainstay	£19.00
One pair seatstays	£28.50
One pair chainstays	£28.50
Complete rear triangle with Campag. ends	£57.50
New Campag. rear ends	£32.00
New Campag. front ends	£16.00
New fork column	£15.00

Mercian Frame Finishes

Please refer to the Mercian frame catalogue for our colour samples. The reference numbers and colour names detailed below are shown in the catalogue.

1	Emerald Green Flamboyant	33	Mauve Enamel
2	Red Flamboyant	34	Butterscotch Enamel
3	Gold Flamboyant	35	Bianchi Blue Enamel
4	Dark Blue Flamboyant	36	Mercier Pink Enamel
5	Lime Green Flamboyant	37	Kingfisher Blue Flamboyant
6	Anquetil Blue Flamboyant	38	Purple Flamboyant
7	Ruby Flamboyant	39	Rose Polychromatic
8	Champagne Polychromatic	40	Chocolate Brown Enamel
9	Purple Polychromatic	41	French Blue Enamel
10	Gold Polychromatic	42	Maroon Enamel
11	Coffee Bronze Polychromatic	43	Flame Red Pearl
12	Metallic Blue Polychromatic	44	Silver Pearl
13	Golden Bronze Polychromatic	45	Electric Blue Pearl
14	Silver Polychromatic	46	White Pearl
15	Green Polychromatic	47	Turquoise Pearl
16	Blue Polychromatic	48	Lime Pearl
17	Lilac Polychromatic	49	Dusky Pink Pearl
18	Gunmetal Grey Polychromatic	50	Tangerine Pearl
19	Cream Enamel	51	Moss Green Pearl
20	Purple Enamel	52	Tabacco Pearl
21	Beige Enamel	53	Mauve Pearl
22	White Enamel	54	Rich Gold Pearl
23	Red Enamel	55	Antique Gold Pearl
24	Light Blue Enamel	56	Deep Plum Pearl
25	Black Enamel	57	Beige Pearl
26	Yellow Enamel	58	Blue Intenso Pearl
27	Orange Enamel	59	Champagne Pearl
28	Royal Blue Enamel	60	Racing Green Pearl
29	Riviera Blue Enamel	61	Ice Blue Pearl
30	Apple Green Enamel	62	Leaf Green Pearl
31	Canary Yellow Enamel	63	Orange Pearl
32	British Racing Green Enamel		

FRAME INFORMATION

Reynolds "Professional" Tubing (approximately $\frac{3}{4}$ lb lighter) can be used on most models, except the Classic and Olympic, at £30.00 extra plus VAT.

Reynolds Extra Long Tubeset for Frames from 26½" to 30" can be used on the King of Mercia, Professional and Vincitore, at £30.00 extra plus VAT.

Cinelli Investment Cast Bottom Bracket Shells and Fork Crowns can be used on most models, except the Classic and Olympic, at £10.00 extra plus VAT per item.

All frames are now built for 6 speed rear ends, unless otherwise requested.

All Racing Frames are now drilled for Allen Key Fitting Brakes, with Tunnels under B.B. — unless otherwise requested.

Please refer to the Repair Price List for the cost of any additional brazings required that are not included in the frame price.