

MERCIAN CYCLES LTD.



**Specialists in Handbuilt
Frames and Cycles where
Craftsmanship and Quality count**

Showrooms: 7 SHARDLOW ROAD, ALVASTON, DERBY, DE2 0JG. Tel: 752468.

Office & Works: PONTEFRAC STREET, ASCOT DRIVE, DERBY, DE2 8JD. Tel: 46786.

MERCIAN

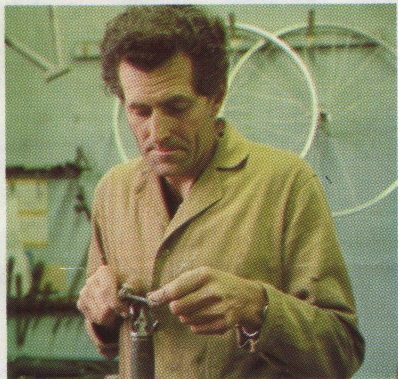
Custom Built Frames for the enthusiast

Mercian Cycles have been hand building frames in Derby for over 40 years and our standards for accuracy in building and the finest finishes available are known by enthusiasts throughout the world. Our Company name Mercian can be traced back into the history of bygone days – we are situated in the ancient Kingdom of Mercia – the capital being Repton – now a village a few miles south of Derby and famous for its public school. Natur-



lugs are hand brazed one at a time on the open hearth, which is the traditional method of hand building and is the hallmark of a top line lightweight frame.

Our top of the range models each have lugwork which is hand cut from blank lugs and our designs are sought by customers from all over the world. After building, all frames are shotblasted for a high quality surface finish before receiving the first of five finishing coats of paint and varnish.



ally the people of Mercia were called Mercians. Every Mercian frame is built from the world renowned Reynolds double butted tubing, and each frame is hand made one at a time by one craftsman. No factory production line methods are used and so each Mercian frame is consistent in quality and finish. Every tube used on the frame is hand mitred, so that the internal joints on each frame are a perfect fit. All the



Each frame is sprayed to customers choice and is then oven-baked to give the most durable finish known. After hand lining and transfers, the frame is given a coat of clear varnish for a lasting finish.

Mercian frames can be finished in any colour from our range of over sixty colours – if your choice is not shown, then we can do almost any colour if a sample is supplied with the order. Enamel finishes can be had in almost any colour, but



MERCIAN

the other finishes can only be in the colours shown. Polychromatic colours have a metallic effect and our flamboyant finishes are a translucent colour on top of a silver undercoat. Our new Italian Pearl finishes have a metal flake effect and have to be seen in sunshine to appreciate the beautiful effect of this new finish. Each frame is then checked before despatch and each Mercian craftsman is conscious of quality control, taking great pride in the frame we produce.

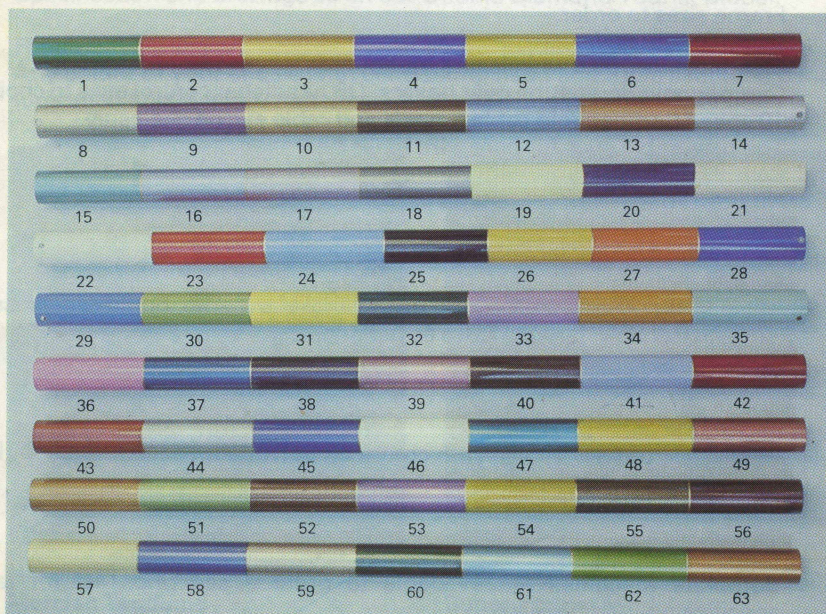


**ANY MODEL
CAN BE BUILT
INTO A
COMPLETE
CYCLE—
TO YOUR
SPECIFICATION**

(Details and Price upon request)

Mercian Frame Finishes

Please quote Reference No. when ordering.



MERCIAN



After many years of planning and testing, Mercian Cycles are now able to offer one of the finest tandem frames ever produced. The machines handling, workmanship, and finish are the finest available. The design is extremely responsive yet comfortable, making it suitable for racing as well as touring. The frame is of bronze welded construction throughout, thus enabling over sized double butted tubing to be used for added rigidity. Our tandem frames are all made by one of our top craftsmen, and each frame is handmade to customer's own requirements.

DOUBLE DIAMOND TOURIST MODEL

Reynolds '531' Double Butted Tubing.

Frame sizes to order.

Campagnolo ends.

Clearance for 700 c wheels and mudguards.

Campagnolo down tube gear bosses, OR handlebar control eyes to choice.

10 speed Campagnolo cable tunnels and cable eye on chainstay.

Top tube cable eyes for bare wire brake operation.

Cantilever brake pivots with centre pull bridge on seatstays.

No pump pegs (frame-fit pump used).

Allen key seat lug bolt fitting.

Seat pillar size (not included) – 27-00 m.m.

Campagnolo headset.

Any additional brazings for hub or disc brake, dynamo, bottle cage bosses, lamp boss, or carriers are extra as per price list.

Finish

Any colour of your choice with contrasting head and seat tube band, lugs lined and Mercian transfers. Chrome plating to order.

Complete Machines

Complete machines are available to order – see price list for latest specification and details.



MERCIAN



Super Tourist

The Super Tourist Tandem is ideal for extended tours with heavy loads. This model has a $1\frac{1}{8}$ " bracing tube from the centre of the head through to the rear seat tube with extra stays brazed onto the seat stays above the rear ends. This design is ideal for larger frame sizes for added rigidity, but is not practical on small frames as the head tube is not big enough for the extra bracing tube. On frames with different seat tube size, the top tubes are sloped in a direct line, as this design is more rigid. Customers should note that top tube measurements are measured in a horizontal plane, as on a solo frame, and not along a sloping top tube.

SUPER TOURIST MODEL

Reynolds '531' Double Butted Tubing.

Specification and brazings as on our Double Diamond Tourist Model.

Finish

Any colour of your choice with contrasting head and triple seat tube band, lugs lined and Mercian transfers. Chrome plating to order.



**Hand cut Lugs on
Mercian Tandems**



**Rear ends on
Super Tourist Model**



MERCIAN



In an age of mass-production, it is rather pleasing to find a frame with intricate hand cut lugwork as on our Vincitore touring model. Our craftsmen spend many hours cutting and filing the Vincitore lugs from blank lugs, and the result is a distinctive frame that is not available from any other manufacturer in the world. Also available with long fancy spearpoints on bottom bracket as Vincitore Special – see price list for extra cost.

Touring Model Specification

Reynolds '531' Double Butted "Competition" Tubing.

Size to order – 19" to 26".

72° head angle – 75° seat angle (19" to 20½").

72° head angle – 74° seat angle (21" to 22").

73° head angle – 73° seat angle (22½" to 24").

73° head angle – 72° seat angle (24½" to 26").

10⅝" bottom bracket height.

17⅞" fork rake (21⅞" on small frames), with new oval Continental forks.

17" chain stays.

½" diameter or ⅝" diameter seat stays with MERCIAN engraved at top.

Clearance for 700 c wheels and mudguards.

Campagnolo ends and mudguard eyes.

Brazed on fittings for 10 speed gears with down tube lever bosses.

3 top tube cable guides on top of top tube.

T.A. bottle cage bosses, Cantilever brake pivots, centre pull brake bridge, lamp boss, and pannier frame fittings can be brazed on at extra cost.

Seat pillar size (not included) 27.2 mm.

TANGE head set fitted.

FINISH

Any colour of your choice with contrasting head and seat tube bands, lugs lined and Mercian transfers. Additional bands extra.

Special Orders

From our experience, the above specification suits most customers, but we can build this model to your own specification if required.



MERCIAN

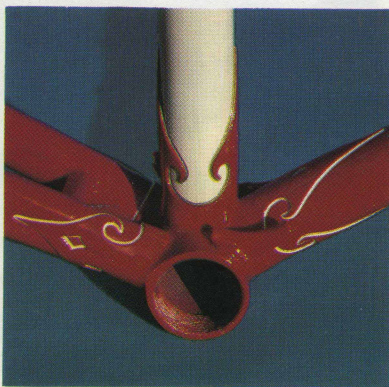


Professional

Our Professional model has a unique spearpoint bottom bracket shell that is rarely found on other makes of frames. The 3" long spearpoints are steel welded onto the bottom bracket shell before the frame is built, and this makes an extremely rigid frame, unlike other makes where a spearpoint is brazed on after the frame is made, and only has a cosmetic value. The frame is built with special hand filed Prugnat Italian lugs.

Racing Model Specification

Specification and brazings as our Strada Speciale model.



Long fancy spearpoints
on Vincitore Special.



Cinelli full slope crown.



MERCIAN



Strada Speciale

Recently introduced to the Mercian range for the rider who likes his frame to be lightened by drilling the lugs, but at the same time, requires a touch of individuality that other frames lack. All the long point lugs are hand cut with a stylish clover leaf. The Strada Speciale also has the seat stays fitted to the rear of the seat tube and an allen key seat lug fitting is included.

Racing Model Specification

Reynolds '531' Double Butted "Competition" Tubing.

Size to order – 19" to 26".

73° head angle – 75° seat angle (19" to 21½").

74° head angle – 74° seat angle (22" to 26").

10⅝" bottom bracket height.

1¼" fork rake (1⅝" on small frames, with new oval Continental forks.

16¼" chain stays.

½" or ⅝" diameter seat stays.

Close clearance for sprint wheels only – no mudguard eyes.

Campagnolo Super Record ends.

Brazed on fittings for 10 speed with down tube lever bosses.

3 top tube cable guides on top of top tube.

T.A. bottle cage bosses, or any other brazed on fittings, can be brazed on at extra cost as per frame price list.

Seat pillar size (not included) – 27.2 mm.

TANGE headset fitted.

Finish

Any colour of your choice with contrasting head and seat tube band, lugs lined and Mercian transfers. Additional bands extra.

Special Orders

From our experience, the above specification suits most customers, but we can build this model to your own specification if required.



MERCIAN



Superlight

The Mercian Superlight model was first introduced to the Mercian range nearly 30 years ago, and was the first frame to be built with the now popular fast back seat stays. Every unnecessary ounce is cut away from the lugs, making it the time triallist's dream frame. The delicate hand cut lugs look barely enough to support the frame, but frames built 30 years ago are still in use today. An allen key seat lug fitting is also included on this model.

Racing Model Specification

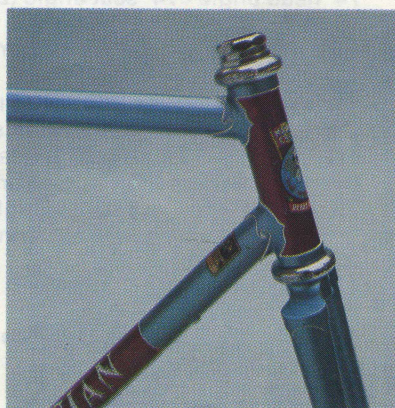
Specification and brazings as on our Strada Speciale model.

Lighter Tubing

Reynolds New '653' Tubing is available at extra cost – see frame price list.



Clover lead cutouts on the Strada Speciale.



Hand cut Superlight lugs.



MERCIAN



Our Pro Lugless model will appeal to the rider who requires an extremely responsive racing frame. This model is built with the lighter Reynolds '653' tubing and the lugless style offers greater flexibility of design to the discerning rider. Another advantage of lugless frames is that they are lighter, as conventional lugs are not required. Building lugless frames requires greater skills than lugged frames, and Mercian are well known for the high standard of bronze welding expertise. The forks have the latest Cinelli aero investment cast fork crown and the overall smooth appearance of the Pro Lugless model is very appealing.

Pro Lugless Model Specification

Reynolds '653' Tubing.

Size to order - 19" to 25".

73° head angle - 75° seat angle (19" to 21½").

74° head angle - 74° seat angle (22" to 25").

10⅝" bottom bracket height.

1¼" fork rake (1⅝" on small frames), with Cinelli Aero fork crown.

16¼" chain stays.

Fastback seat stays butted onto rear of seat tube.

Close clearance for sprint wheels only.

Campagnolo Super Record ends.

Campagnolo gear lever bosses brazed on with tunnels under bottom bracket.

Rear brake cable internal through top tube.

Seat pillar (not included) 27.2mm.

Head set - see price list.

Finish

Any single colour of your choice with Mercian transfers.

Chrome plating to order.

Special Orders

From our experience, the above specification suits most customers, but we can build this model to your own specification.



MERCIAN



The Low Profile model is the latest introduction to the Mercian range. The frame is built in lugless style from the new lighter Reynolds '653' tubing and the aerodynamic style offers less wind resistance. The lugless style, although more time consuming to build, has the advantages of greater flexibility of design, and therefore can be built to any size and specification. The frame is fitted with fastback seatstays for extra lightness, and the fork has the latest Cinelli Aero investment cast fork crown. The machine gives a fantastic ride and has to be ridden to be appreciated.

Low Profile Model Specification

Reynolds '653' Tubing.

Built to each customer's individual specification only.

Headset - see price list.

Finish

Any single colour of your choice with Mercian transfers.

Chrome plating to order.



Pro lugless head with
Cinelli Aero Crown.



Fastback seat stays.



MERCIAN



Our King of Mercia Tourist is the most popular model in our range of custom built touring frames. The frame is built with the Italian long point lugs, with heart cutouts, which are finely filed. The forks are built with the latest Romani semi sloping fork crown, but a Cinelli investment cast crown can be used at extra cost.

Touring Model Specification

Reynolds '531' Double Butted "Competition" Tubing.

Size to order – 19" to 26".

72° head angle – 75° seat angle (19" to 20½").

72° head angle – 74° seat angle (21" to 22").

73° head angle – 73° seat angle (22½" to 24").

73° head angle – 72° seat angle (24½" to 26").

10⅝" bottom bracket height. 17" chainstays.

17⁄8" fork rake (2⅛" on small frames).

½" diameter or ⅝" diameter seatstays with Mercian engraved.

Clearance for 700c wheels and mudguards.

Campagnolo ends and mudguard eyes.

Brazed on fittings for 10 speed with down tube lever bosses.

3 top tube cable guides on top of top tube.

T.A. bottle cage bosses, Cantilever brake pivots, centre pull brake bridge, lamp boss, and pannier frame fittings can be brazed on at extra cost.

Seat pillar size – 27.2 mm (not included).

TANGE headset fitted.

Finish

Any colour of your choice with contrasting head and seat tube bands, lugs lined and Mercian transfers. Additional bands extra.

Special Orders

From our experience, the above specification suits most customers, but we can build this model to your own specification if required.



MERCIAN



Our King of Mercia Racing model is designed for the racing enthusiast who must have the best. Each frame is hand built one at a time by one of our craftsmen, unlike many other makes of a similar price range which are 'production line made'. The forks are fitted with the latest Romani semi-sloping crown together with new continental oval fork blades. The seat stays have Mercian engraved on the top eye which is outlined in contrast.

Racing Model Specification

Specification and brazings as on our Strada Special Model.

Lighter Tubing

Reynolds new '653' tubing is available at extra cost – see frame price list.



Heart cutout lugs and Romani crown on King of Mercia.



Mercian engraved seat stays on King of Mercia.



MERCIAN



Miss Mercian

Our Miss Mercian model is one of the few custom built ladies frames available today. The lugs for ladies frames of the quality that Mercian require are no longer available, so our craftsmen custom make the lugs for this frame. The price of this model reflects this extra care taken in building the frame, but the end result is a masterpiece not available from any other source.

Touring Model Specification

Reynolds '531' Double Butted "Competition" Tubing.

Size to order – 19" to 26".

72° head angle – 75° seat angle (19" to 20½").

72° head angle – 74° seat angle (21" to 22").

73° head angle – 73° seat angle (22½" to 26").

10⅝" bottom bracket height.

17⅞" fork rake (2⅛" on small frames).

17" chain stays.

½" diameter or ⅝" diameter seat stays with MERCIAN engraved at top.

Clearance for 700c wheels and mudguards.

Campagnolo ends and mudguard eyes.

Brazed on fittings for 10 speed gear with down tube lever bosses.

Brake cable eyes brazed on top of twin lateral stays for brake operation on twin lateral stay bridge.

Pump pegs under twin lateral stays, or front of seat tube.

Seat pillar size (not included) 27.2 mm.

TANGE headset fitted.

Finish

Any colour of your choice with contrasting head and seat tube band, lugs lined and Mercian transfers. Chrome plating to order.

Additional bands extra.

Special Orders

From our experience, the above specification suits most customers, but we can build this model to your own specification if required.



MERCIAN



Our Olympic model is built from Reynolds 531 "Competition" tubing and is an excellent all rounder frame. This model is designed for the rider who is content to leave the geometry and design to our many years of experience. The frame is built with Italian long point lugs with heart cutouts and the fork has the latest Romani semi sloping fork crown.

Olympic Model Specification

Reynolds '531' double butted "competition" tubing.
20" to 26" in half inch sizes.

72° head angle – 75° seat angle (20½" and under).

72° head angle – 74° seat angle (21" to 22").

73° head angle – 73° seat angle (22½" to 24").

73° head angle – 72° seat angle (24½" and over).

10⅝" bottom bracket height.

17⅞" fork rake (2⅛" on small frames).

Semi wrapover seat stays.

17" chain stays.

Campagnolo ends with mudguard eyes.

Brazed on fittings for 10 speed gears with lever 'pip' on down tube.

3 top tube cable guides on top of top tube.

Clearance for 700c wheels and mudguards.

Seat pillar size – 27.2 mm (not included).

TANGE headset fitted.

Optional Extra Braze-ons

See frame price list.

Finish

Any colour of your choice, with lugs lined and Mercian transfers. Any additional bands charged extra. Chrome plating to order.

Special Orders

No alterations to the above specification can be accepted.



MERCIAN



Our Classic frame is a recent addition to the Mercian range. The frame and forks are built from the new Reynolds '531' "Special Tourist" double butted tubing. The frame is built with Italian long point lugs and Campagnolo ends. The Classic is a lively touring frame and has the usual Mercian high quality workmanship not usually seen on frames of this price.

Classic Model Specification

Reynolds '531' double butted "Special Tourist" Tubing.

20" to 26" in half inch sizes.

72° head angle – 75° seat angle (20½" and under).

72° head angle – 74° seat angle (21" to 22").

73° head angle – 73° seat angle (22½" to 24").

73° head angle – 72° seat angle (24½" and over).

10⅝" bottom bracket height.

17/8" fork rake (2⅛" on small frames).

Semi wrapover seat stays.

17" chain stays.

Campagnolo ends with mudguard eyes.

Braze on fittings for 10 speed gears with lever 'pip' on down tube.

3 top tube cable guides on top of top tube.

Clearance for 700c wheels and mudguards.

Seat pillar size – 27.2mm (not included).

TANGE headset fitted.

Optional Extra Braze-ons

See frame price list.

Finish

Any colour of your choice, with lugs lined and Mercian transfers. Any Additional bands charged extra. Chrome plating to order.

Special Orders

No alterations to the above specification can be accepted.

Mercian Cycles Ltd.

Retail Sales and Showroom:
**7 Shardlow Road, Alvaston,
Derby, DE2 0JG.
Telephone (0332) 752468**

Office and Works:
**Pontefract Street, Ascot Drive,
Derby, DE2 8JD.
Telephone (0332) 46786**

Retail Frame Price List

JULY 1st 1991

VAT EXTRA AT CURRENT RATE (UK SALES ONLY)

LOW PROFILE

Our Low Profile model is built in lugless style from the new lighter Reynolds "653" tubing, and the aerodynamic style offers less wind resistance. The machine gives a fantastic ride and has to be ridden to be appreciated. Headset of your choice extra at current prices.

£325.00

PRO LUGLESS

The Pro Lugless model is built from the lighter Reynolds "653" tubing and the lugless style has the advantages of greater flexibility of design. As lugs are not used, this also helps to reduce the weight of the frame. Headset of your choice extra at current prices.

£325.00

VINCITORE

Intricate hand cut lugs make this a really distinctive model, and is one of our most popular touring frames. Long B.B. spearpoints (similar to professional) with fancy cutouts can also be ordered on Vincitore Special at £75.00 extra + VAT.

£295.00

PROFESSIONAL

Reinforced spearpoints on the bottom bracket shell add to rigidity, which makes an excellent racing frame.

£265.00

SUPERLIGHT

Hand cut lugs cut away in a distinctive style make this an ideal time trial frame.

£265.00

STRADA SPECIALE

A specially introduced model for the discerning rider — the lugs are hand cut with stylish clover leaf cutouts

£265.00

MISS MERCIAN

Distinctive styling and lugwork — one of the few custom-made ladies frames available today.

£265.00

KING OF MERCIA

Our most popular custom built frame — available in either touring or racing versions — built with long point lugs and heart cutouts, with the new Italian continental oval forks now included in the price.

£225.00

SUPER VIGORELLI

The only track model in the Mercian range — built to order with long point lugs, with heart cutouts.

£225.00

OLYMPIC

Our Olympic model is built from Reynolds 531 "Competition" tubing and is an excellent all rounder frame, which will appeal to the rider who likes a lively, responsive machine. Campagnolo lever bosses, bottle cage bosses, Blackburn rack eyes, and cantilever brake pivots can be brazed on at extra cost.

£210.00

CLASSIC

Built from Reynolds 531 Special Tourist tubing, only to our specification, this model has the class workmanship as the rest of the Mercian range at an economical price. Campagnolo lever bosses, bottle cage bosses, Blackburn rack eyes, and cantilever brake pivots can be brazed on at extra cost.

£200.00

FURTHER FRAME INFORMATION IS ON THE BACK OF THE PRICE LIST

Renovation Price List

(FOR ANY MAKE OF FRAME)

JULY 1st 1991

VAT EXTRA AT CURRENT RATE (UK SALES ONLY)

FINISH

Frame and forks stove enamelled in enamel or polychromatic	£35.00
Frame and forks stove enamelled in Italian pearl or Flamboyant	£40.00
Frame and forks stove enamelled in Fluorescent	£45.00
Frame only stove enamelled in enamel or polychromatic	£32.00
Frame only stove enamelled in flamboyant or Italian pearl	£37.00
Forks only stove enamelled in enamel or polychromatic	£12.00
Forks only stove enamelled in flamboyant or Italian pearl	£14.00
Trike frame and forks in enamel or polychromatic	£52.50
Tandem frame and forks stove enamelled in enamel or polychromatic	£70.00
Tandem frame and forks stove enamelled in Italian pearl	£80.00
Tandem frame and forks stove enamelled in flamboyant	£80.00

CONTRASTS

	Enamel Lustre	Fluorescent, Pearl; Flam.
Contrast band on seat tube	£6.50	£7.50
Extra bands on seat tube — each	£1.25	£1.40
Whole seat tube in contrast colour	£10.00	£12.00
Barbers pole on seat tube	£16.00	£18.00
Rear triangle and forks in contrast colour	£16.00	£20.00
Head tube	£7.25	£8.00
Band on tube, or down tube	£6.50	£7.50
Oval panel on seat tube, or down tube (each panel)	£12.00	£14.00
Overspray — one extra colour	£15.00	£20.00
Overspray — two extra colours	£20.00	£25.00
Overspray — three extra colours	£25.00	£30.00

LINING

Lug lining	£7.75
------------------	-------

TRANSFERS

Fit makers transfers (transfers extra at cost)	£5.50
Supply and fit Olympic band (per band)	£1.00

CHROME

Mask and save chrome crown	£7.50
Mask and save chrome front dropouts	£7.50
Mask and save chrome rear dropouts	£7.50
Mask and save chrome front ends	£7.50
Mask and save chrome rear ends	£7.50
Mask and save chrome head lugs	£12.00

FITTINGS

Fit new head set (new fittings charged at current prices)	£5.50
Fit new bottom bracket set (new fittings charged at current prices)	£5.50
Remove and save head set	£4.50
Remove and save bottom bracket set	£4.50
Remove and refit head set (including new bearings)	£10.00
Remove and refit bottom bracket set (including new bearings)	£10.00
Strip and reassemble cycle — fitting of new components charged extra	£40.00
Remove and refit head badge	£2.00

Repair Price List for Any Make of Frame

VAT EXTRA AT CURRENT RATE (UK SALES ONLY)

The first part of this price list is for the repair of any make of frame, including Mercian frames. Headset and bottom bracket fittings should be removed if possible. All prices include Reynolds '531' Double Butted Tubing, forks and stays.

New pair forks (standard crown)	£47.00
New pair forks (Romani crown)	£53.00
Braze on pump pegs, brake or gear cable guides, rack eyes, chain peg — each	£3.25
Braze on 'Saba' combined stop/guide on c/stay	£3.25
Campagnolo gear hanger brazed on	£9.50
New reinforced brake and mudguard bridge	£9.50
New Bottom Bridge	£8.00
Lamp bracket boss	£5.50
Tunnel on bottom bracket — Campagnolo	£4.50
Tunnel under bottom bracket	£5.00
Re-track frame and forks	£9.50
Re-track frame only	£6.50
Straighten and re-track forks — if possible	£8.50
Centre pull bridge on seat stay — including adjuster	£9.50
Remove brazed-on bits and clean up tube — each item	£2.25
Braze on Allen key seat lug fitting (with key and bolt)	£15.00
Braze on cantilever brake parts — per brake (please state high pressures or sprints)	£9.50
Small dents filled in where possible — each	£4.50
Braze on TA bottle cage bosses (with Allen key and bolts)	£6.50
Braze on Campag lever boss	£5.50
Braze on dynamo bracket on frame, or on c/stays for sanyo dynamo	£15.00
Remove seat pillar or h/bar extension	£7.75
Braze on Blackburn rear rack eyes	£13.00
Braze on Blackburn front lowrider or Custom lowrider rack eyes	£13.00
Concealed dynamo wiring in frame	£13.00
Stamp post code on bottom bracket	£2.50
Drill frame and fork for Allen key brakes	£6.50
Braze on front gear changer boss on seat tube	(Please state chain ring sizes) £15.00
Concealed cable on top tube	£15.00
Drill out rear end adjuster (each)	£4.00
Fill metal head badge holes	£3.50

Repair Price List for Mercian Frames

VAT EXTRA AT CURRENT RATE (UK SALES ONLY)

This part of the price list is for the repair of Mercian frames only. Please note that it is not practical for us to repair other makes of frames requiring the repairs detailed on this part of the price list.

New bottom bracket shell and bottom bridge	£38.50
New top tube	£30.00
New down tube	£30.00
New top tube and down tube	£60.00
New seat tube	£37.50
New head tube and lugs	£37.50
New top, down, head tube and head lugs	£72.50
Fit single seatstay	£27.50
Fit single chainstay	£27.50
One pair seatstays	£42.50
One pair chainstays	£42.50
Complete rear triangle with Campag. ends	£77.50
New Campag. rear ends	£42.50
New Campag. front ends	£21.50
New fork column	£20.50

Mercian Frame Finishes

Please refer to the Mercian frame catalogue for our colour samples. The reference numbers and colour names detailed below are shown in the catalogue.

1	Emerald Green Flamboyant	33	Mauve Enamel
2	Red Flamboyant	34	Butterscotch Enamel
3	Gold Flamboyant	35	Bianchi Blue Enamel
4	Dark Blue Flamboyant	36	Pink Enamel
5	Lime Green Flamboyant	37	Kingfisher Blue Flamboyant
6	Anquetil Blue Flamboyant	38	Purple Flamboyant
7	Ruby Flamboyant	39	Rose Polychromatic
8	Champagne Polychromatic	40	Chocolate Brown Enamel
9	Purple Polychromatic	41	French Blue Enamel
10	Gold Polychromatic	42	Maroon Enamel
11	Coffee Bronze Polychromatic	43	Flame Red Pearl
12	Metallic Blue Polychromatic	44	Silver Pearl
13	Golden Bronze Polychromatic	45	Electric Blue Pearl
14	Silver Polychromatic	46	White Pearl
15	Green Polychromatic	47	Turquoise Pearl
16	Blue Polychromatic	48	Lemon Pearl
17	Lilac Polychromatic	49	Dusky Pink Pearl
18	Gunmetal Grey Polychromatic	50	Oyster Pearl
19	Cream Enamel	51	Moss Green Pearl
20	Purple Enamel	52	Tabacco Pearl
21	Beige Enamel	53	Mauve Pearl
22	White Enamel	54	Rich Gold Pearl
23	Red Enamel	55	Antique Gold Pearl
24	Light Blue Enamel	56	Deep Plum Pearl
25	Black Enamel	57	Beige Pearl
26	Yellow Enamel	58	Blue Intenso Pearl
27	Orange Enamel	59	Champagne Pearl
28	Royal Blue Enamel	60	Racing Green Pearl
29	Riviera Blue Enamel	61	Ice Blue Pearl
30	Apple Green Enamel	62	Leaf Green Pearl
31	Canary Yellow Enamel	63	Orange Pearl
32	British Racing Green Enamel		

Frame Information

Low Profile, Pro Lugless, Olympic, and Classic models are finished in one colour to choice — any bands or overspray are extra as this price list.

All other models are finished in one colour to choice with contrasting head and seat tube band OR overspray in one extra colour — any additional bands or overspray are extra as this price list.

Reynolds new lighter "653" tubing is now used on the Low Profile and Pro Lugless models, and can be used on most models, except the Classic and Olympic, at £60.00 extra plus VAT.

Reynolds "Professional" tubing (approximately ¾lb lighter) can be used on most models, except the Classic and Olympic at £40.00 extra plus VAT

Reynolds extra long tubeset for frames from 26½" to 30" can be used on the King of Mercia, Professional and Vincitore, at £40.00 extra plus VAT

Cinelli investment cast bottom bracket shells, Cinelli investment cast lugs, and Cinelli investment cast fork crowns can be used on most models, except the Classic and Olympic — see separate price list for details and prices.

All MERCIAN frames are built with Campagnolo ends — any other make can be supplied at £10.00 extra+VAT.

All frames are now built 126mm rear ends unless otherwise requested.

All racing frames are now drilled for Allen key fitting brakes, with tunnels under the bottom bracket — unless otherwise requested.

Please refer to the Repair Price List for the cost of any additional brazings required that are not included in the frame price.